



Automate engineering processes at scale

The power of combining SPDM with engineering workflow automation

pSeven User Conference 2023 | Oct. 18th

Michael S. Murgai, Executive Board Member, PID|Tec.

murgai@pdtec.de

Laurent CHEC, General Director,



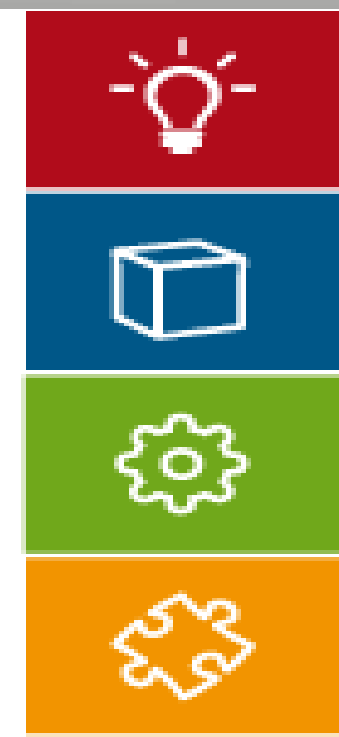
laurent.chec@pseven.io



P|D|Tec.

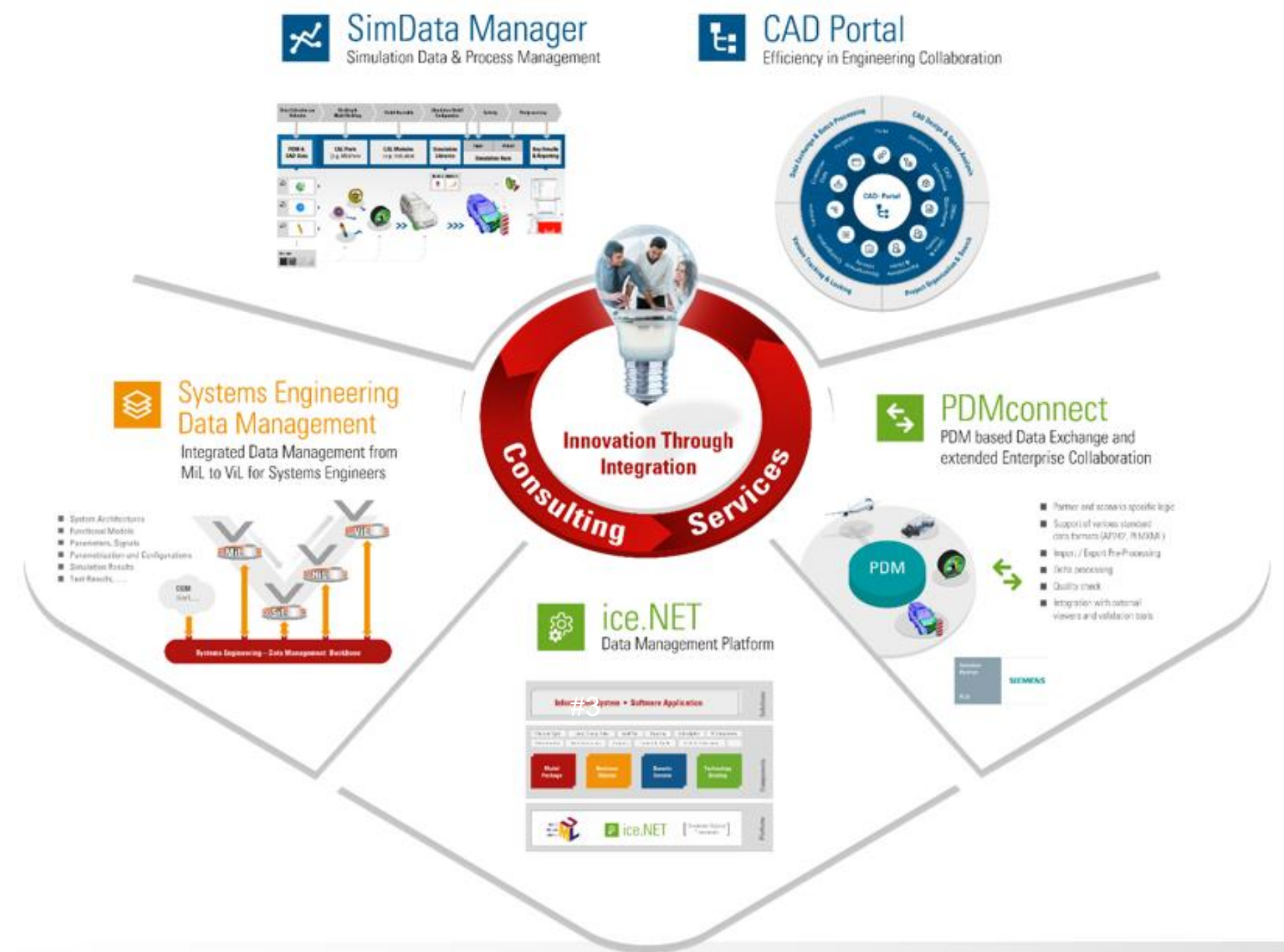
About PDTec

for Datadvance Annual Conference 2023





- PD Tec stands for ... **P**roduct **D**ata **T**echnology
- Our MISSION: Innovation through integration
- Our DNA: Openness and agility is our identity
- Our FOCUS: Engineering Data Management & Data Xchange
- 25th anniversary April 2024
 - 25 years of engineering expertise captured in PD Tec's Engineering Platform
 - Innovation „engineered in Germany“
- PD Tec Group is headquartered at Technology Park Karlsruhe, Germany, with a development site in Poland
- Industries
 - Automotive
 - Ship
 - Aerospace & Defence
 - Mechanical & Plant Engineering



PD Tec Key Customers (Excerpt)



DAIMLER



MAGNA



VALME



VDA

JAMA

Ohertz



AiAG

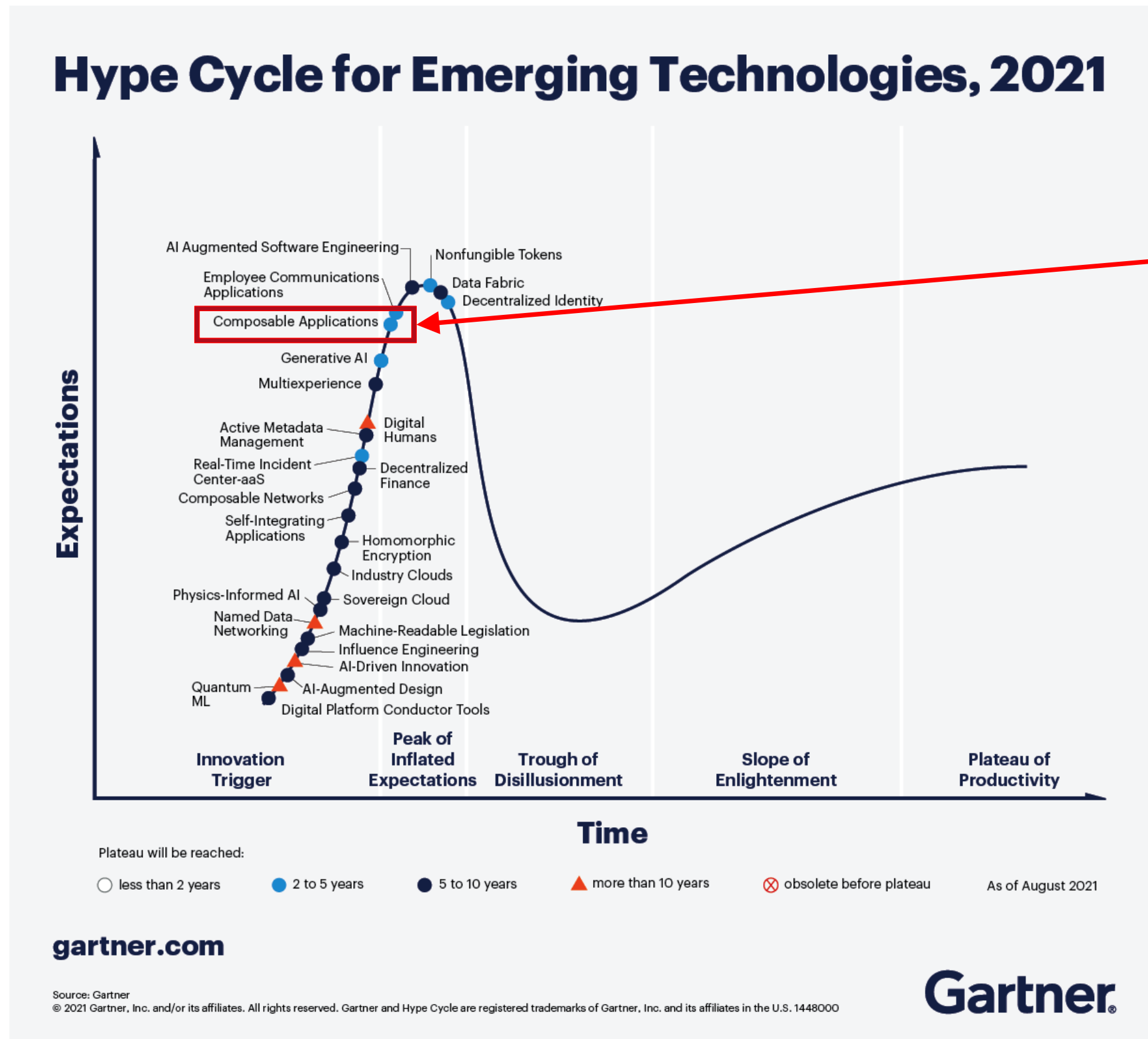


VOLVO



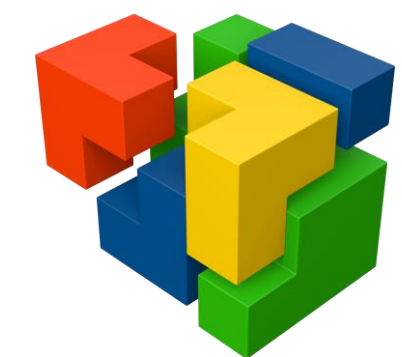
Statement by the customers:
With the exception of one automotive OEM, all German automotive OEMs today rely on solutions from PD Tec!

PD Tec Engineering Platform addresses Gartner's vision



- **PD Tec Engineering Platform is addressing Gartner's vision of „Composable Applications“**

- PD Tec's Engineering Platform combines the advantages of an open, scalable, flexible and agile platform
 - Higher Resilience
 - Reduction of risks
 - Shorter Return-on-Invest

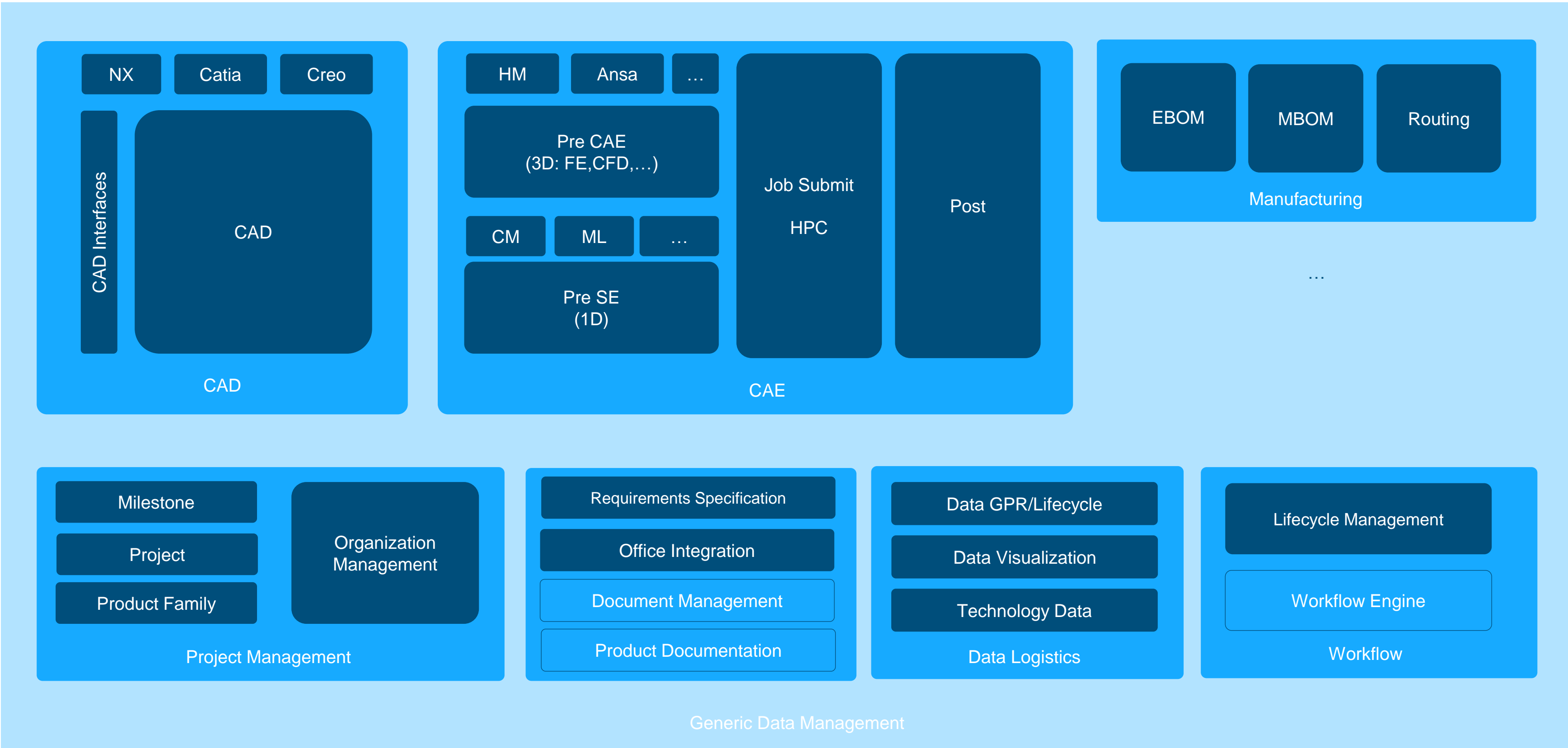


Background:

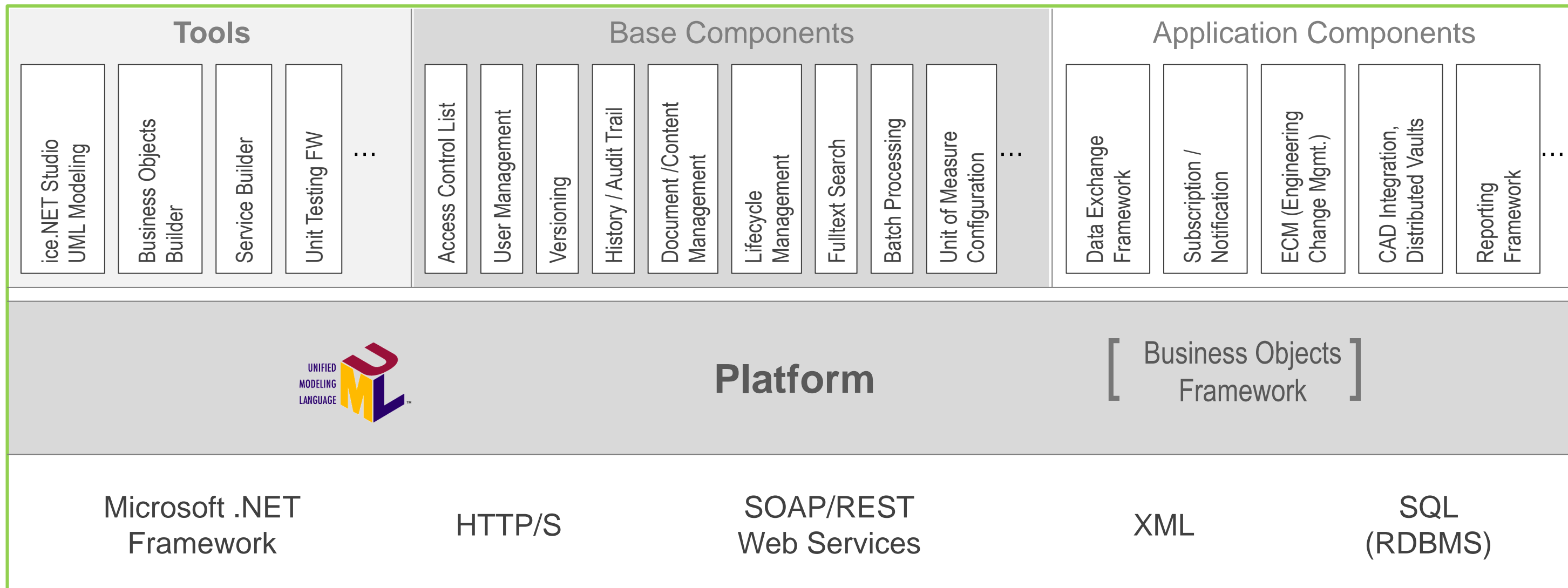
- Driven by innovation the industry is currently facing an increasing complexity in their products and engineering processes
- Monolithic, inhomogeneous software solutions increase the overall complexity in the customers' business
- The result: Higher costs, less flexibility and agility, lower ability to adapt to new circumstances -> higher risks
- According to Gartner „Composable Applications“ are the key to deliver more benefits to the industry



PD Tec Engineering Platform: Domain Map of Apps (Extract)



PDTec Engineering Platform driving Business Benefits





Thank you!

P|D|Tec.

Inspiring || Engineering || Excellence

PD Tec AG
Albert-Nestler-Str. 21
76131 Karlsruhe

Phone: +49 (0)721-6 18 44-0
E-mail: info@pdtec.de
Web: www.pdtec.de

Follow us on





Automate engineering processes at scale

SPDM, Eng. Workflow automation Strengths and challenges...



PDTec/SDM high level strengths and challenges

■ Strengths:

- Manage all CAE data & projects
- Collaborative environment
- Traceability
- Versioning
- Break silos
- Avoid rework
- Knowledge capture
- Reduces time spent on searching info (Search engine and data pedigree)

■ Challenges:

- SPDM need to interoperate with a zoo of CAE software
- Embeds business workflow logic but misses engineering workflow automation/execution.
- Gathers engineering data but doesn't embed AI.
- Doesn't include design exploration capabilities (DoE, Optim, Stochastic, etc.)
- User adoption can be challenging (seen as a burden by engineers)



pSeven Enterprise high level strengths & challenges

■ Strengths (from SPDM standpoint):

- Low-code collaborative engineering
- Engineering tool agnostic
- Automates engineering workflows
- Predictive analytics suite
- Design Exploration suite
- Knowledge capture
- Owns simulation context info

■ Challenges:

- Generates a lot of data
- No traceability
- Limited version control
- No contextual search engine
- Limited metadata management
- No business workflow logic



Mark Norris, international SPDM consultant

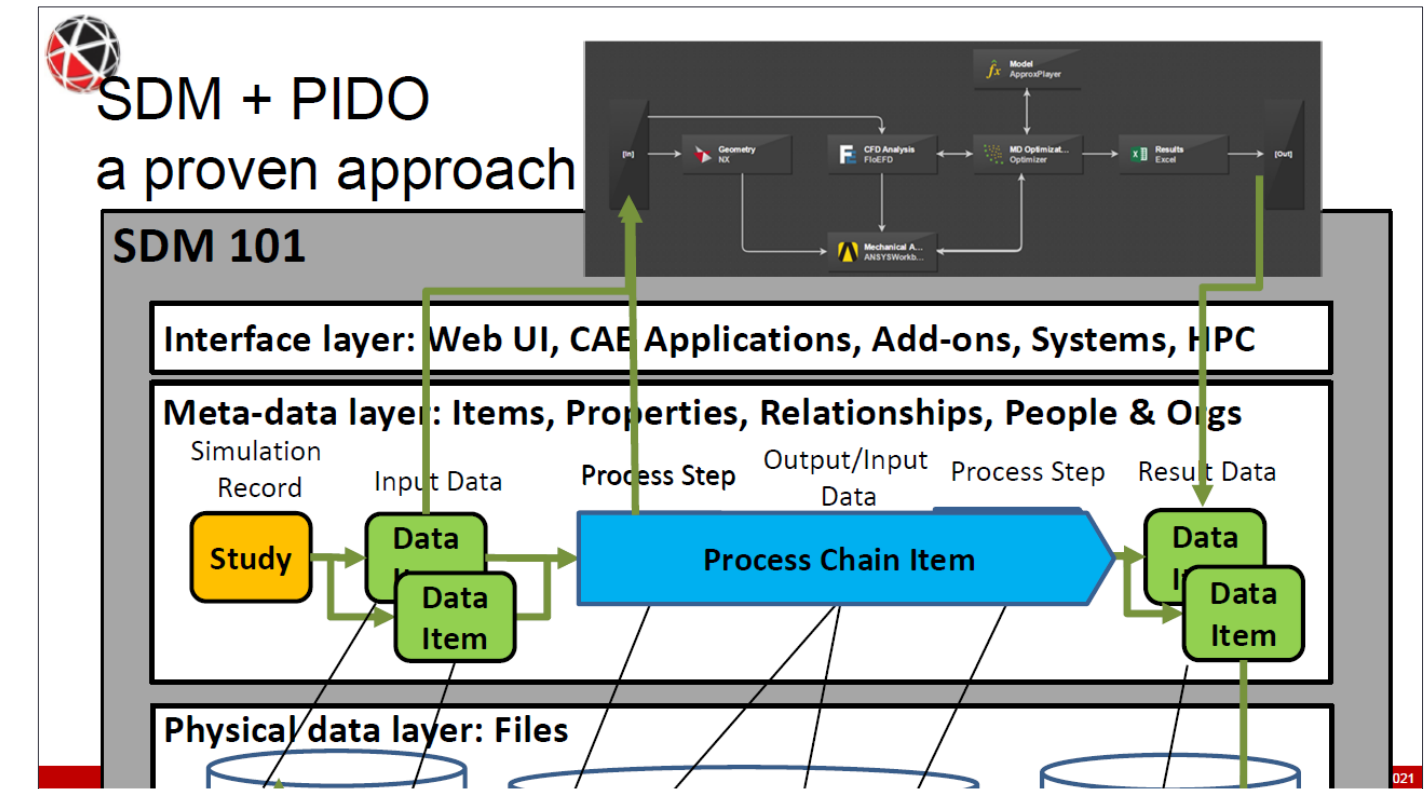
Cost of integrations between 100's of CAE desktop applications and platforms is a major obstacle

Current Technology:

- Development of point to point, API to API, connectors
- 30 to 80 connectors need to be developed for an enterprise project
- Connectors need multiple versions and frequent updates
- Competences on both data platform and CAE application APIs are rare
- Conflicts between vendors, difficult to test
- Connectors specific to a platform
- ~800 connectors needed for industry coverage
- **A major obstacle to digital engineering**

Data Management Platforms ↔ connectors ↔ Data Preparation, Simulation, Post-Processing

NAFEMS World Congress 2021



Conclusion

- Levering P7's process modelling and integration framework will accelerate SDM deployment
 - CAE application integrations already available
 - Integrate 1 application instead of 30+
- Simulation results can be used directly to build surrogate models in P7
- Direct CAE application integration can then support ad-hoc simulation activities

NAFEMS World Congress 2021

Mark Norris CEng MIMechE MBA
mark.norris@theSDMconsultancy



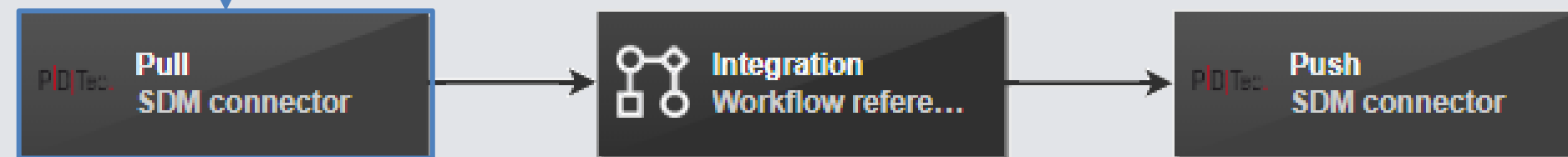
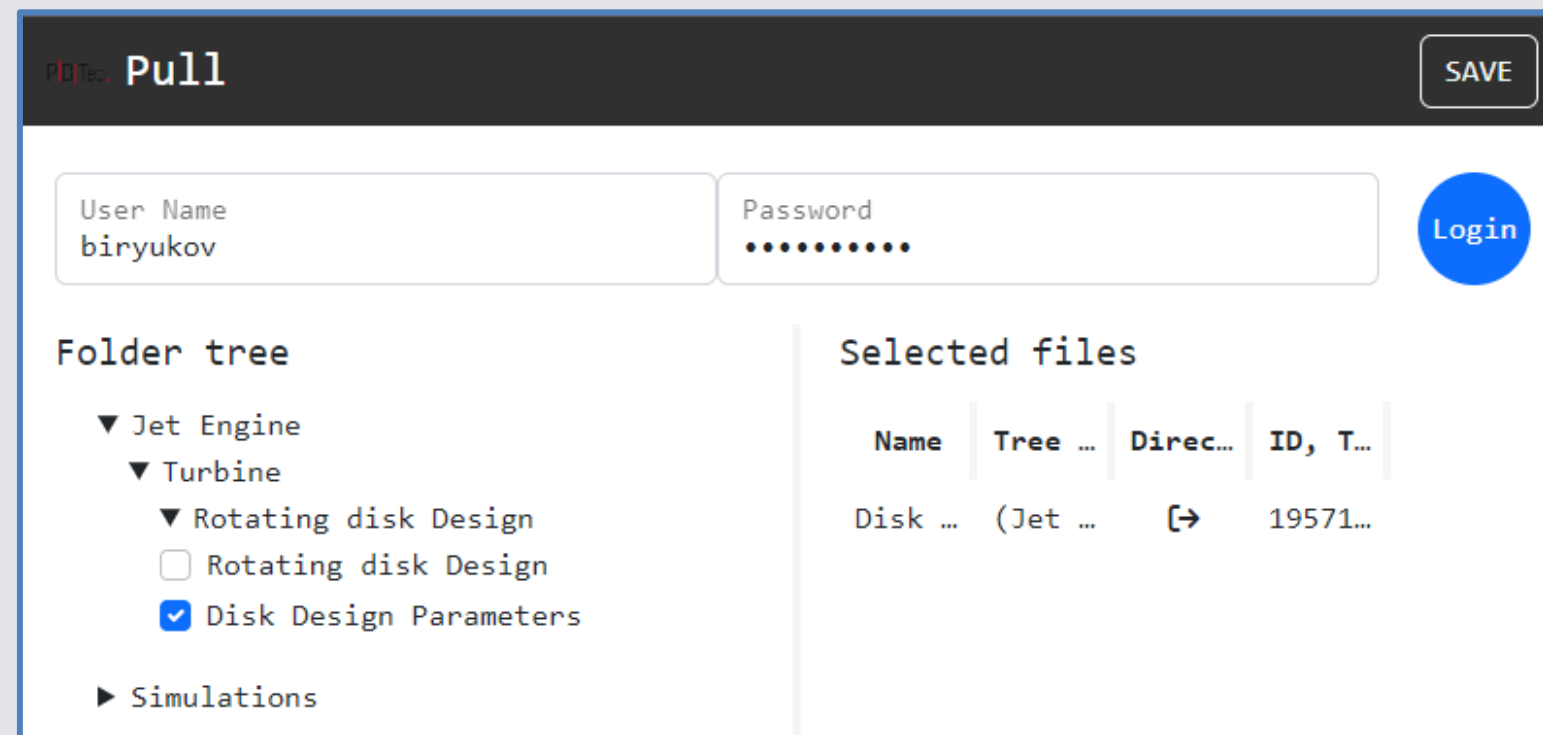
Automate engineering processes at scale

SPDM + “Eng. Workflow Automation”, a winning combination!



Interoperability

- pSeven Enterprise is universal plug, for SPDM solutions, to a zoo of software and models.



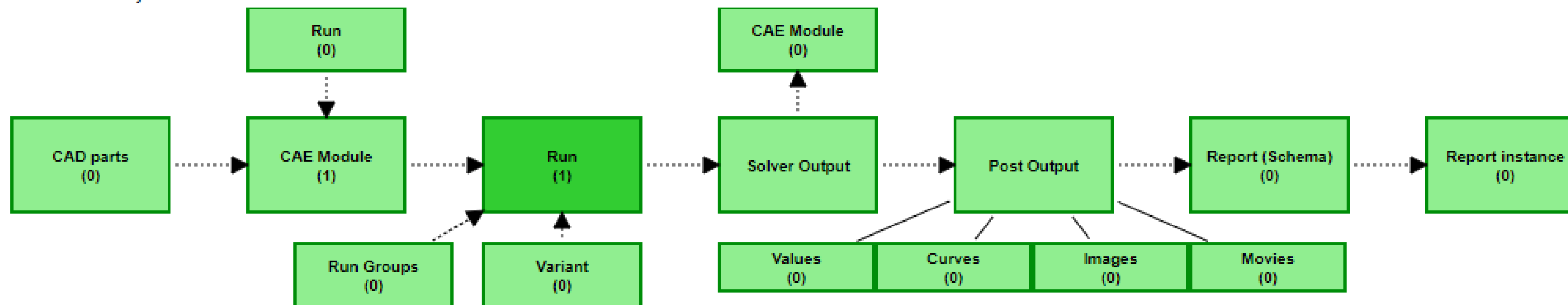
Standard SPDM block linked to any other block/workflow

- How?
 - One single SPDM block ensures communication from/to SPDM.
 - SPDM block can be linked to any other block of the engineering workflow.

Traceability

- pSeven Enterprise naturally owns **simulation context** information:
 - User data (who runs what)
 - Which application, in which version
 - Hierarchy (Object B is derived from Object A)
- Context information can then be captured in SPDM as metadata and dependencies (parent/children relationship).

Audit trail: set of objects





Change management

- Facilitate SPDM adoption by engineering teams
 - Make SPDM deployment not intrusive
 - Allow engineers to use SPDM transparently
- How?
 - Seamless integration with SPDM at workflow level.
 - No need to step out of engineering framework to manage data.
 - Special synchronization block ensures communication with SPDM (push/pull).



Version control of engineering workflows

- pSeven Enterprise workflows can be stored as **version-controlled objects** in SDM.
- Workflows can be **redeployed** on-demand to pSeven Enterprise.
- pSeven Enterprise workflows can be packaged and pushed to SDM manually or via **REST API**.
- Workflow blocks are also version controlled.



Run engineering workflows from SPDM as “black box”

- Engineering workflow is available as a selectable method in SPDM.
- Project manager can trigger workflow execution created by domain experts.

- How?
 - List of available workflows (method) is built **dynamically** by querying server.

Rotating Disk

Workflow Selection

Select Workflow Select a Value

RotatingDisk_with_exchange

Parameter edit: SDM integration 1

Integration

SDM integration 2

Parameter r1

Parameter r2

Parameter r3

Parameter r4 0.198

Parameter r5 0.21

Parameter r6 0.23

Parameter t1 0.032

Parameter t3 0.006

Parameter t5 0.032

Parameter M 15

Parameter n 1000



Build predictive models

- Build predictive model by leveraging historical data gathered in SPDM.
- Triggering from SPDM environment.
- Predictive model can be deployed at scale or reuse in other engineering workflows.

■ How?

- pSeven Enterprise:
 - Pulls historical data from SPDM
 - Trains model
 - Validates model
 - Pushes back model to SPDM
 - Predictive model is version controlled



SDM & pSeven integration demo

- The following demo demonstrates a collaborative work on structural analysis of a turbine disk
 - **SimData Manager (SDM)** is used as an SPDM platform for storing models and simulation data.
 - **pSeven Enterprise** is used as a web-based platform for simulation processes automation.
- Two usage scenarios are observed:
 1. User works in **pSeven Enterprise** and automatically pull/push data from/to **SDM** during runs.
 2. User works in **SDM**, he selects a Pre-created **pSeven Enterprise** workflow and triggers batch execution.

THANK YOU

Visit us:

- pseven.io

Contact us:

- info@pseven.io
- 42 Avenue du Général de Croutte, 31100, Toulouse, FRANCE
- Tel: +33 (0) 6 03-84-62-92

Follow us:

- youtube.com/datadvance
- linkedin.com/company/datadvance